

Additional Time Points in NIR Packages



Dairyland Labs has been working hard to continue to add value to our NIR Packages. Just in time for harvest season, the latest updates add digestibility time points for ear corn, earlages and snaplages. There are also additional digestibility time points specific for hay/hay crop silages and corn silages.

- uNDFom/NDFDs now available for Ear Corn/Earlages/Snaplages
- 12hr uNDFom/NDFD for hay/hay crop silages & corn silages included NIR Complete and NIR CNCPS 6.5

uNDFom/NDFDs now available for Ear Corn/Earlages/Snaplages

Package	uNDFom/NDFD timepoints now included
NIR Complete	12, 24, 30, & 240 hours
NIR CNCPS 6.5	12, 72, & 120 hours
NIR NDF Digestibility	30, & 240 hours
NIR Select	240 hours

Advantages to the addition of uNDF/NDFD for Ear Corn, Earlages and Snaplages

- **Quantify variation in fiber digestibility** since ear corn/earlage/snaplage can have quite variable fiber contributions from cob, husk, and potentially some other stalk/leaf material.
- **Define NDF digestion curve/rate of digestion** – will help modeling fiber digestion, especially important in higher fiber/lower starch Earlages/Snaplages.
- **Sub-sampling variation** – can be very significant with fibrous earlages/snaplages especially with variable particle sizes of fiber. Taking more samples at a lower cost can overcome the sub-sampling challenges.

12hr uNDFom/NDFD for hay/hay crop silages & corn silages included in:

Package	uNDFom/NDFD timepoints now included
NIR Complete	12, 24, 30, & 240 hours **NEW**
NIR CNCPS 6.5	12, 30, 120, & 240 hours

Advantages to the addition of uNDF/NDFD for hay/hay crop silages and corn silage

- **Qualitatively differentiate** – high quality grass and alfalfa samples (see graphs)
- **Define digestion curve/rate of digestion** – the addition of the 12hr timepoint will help define the digestion curve/rate of digestion since many of the highest quality grass and alfalfa samples are already past their peak digestion by 24 or 30 hours of digestion. (see graphs)

Serving the testing needs of agriculture since 1958

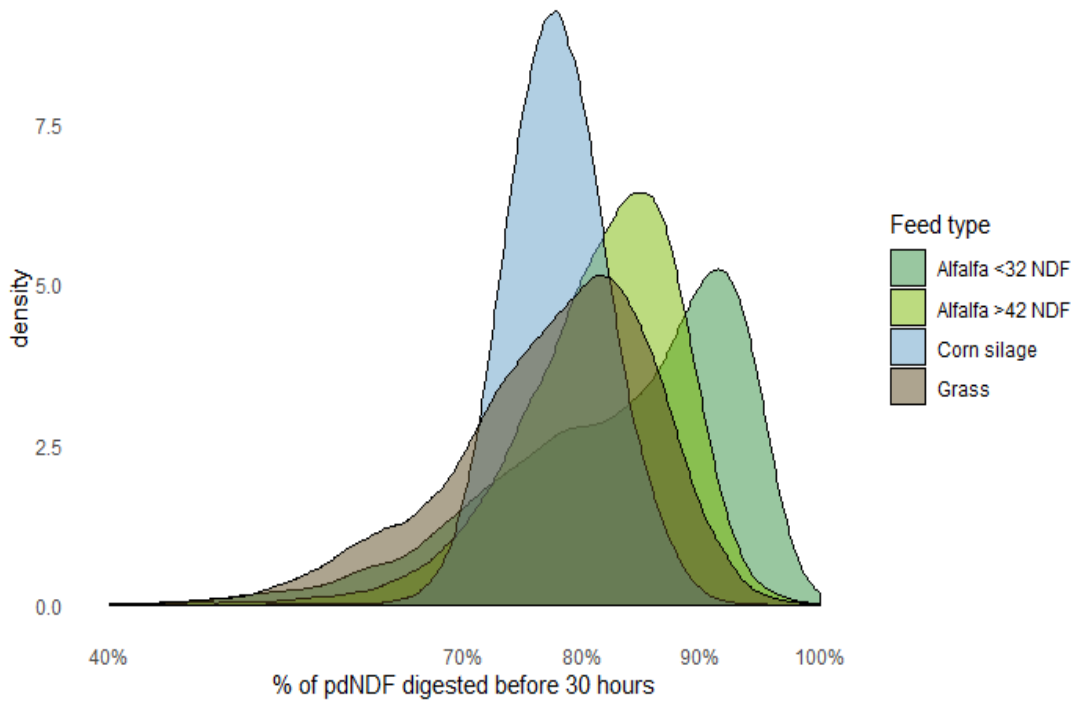
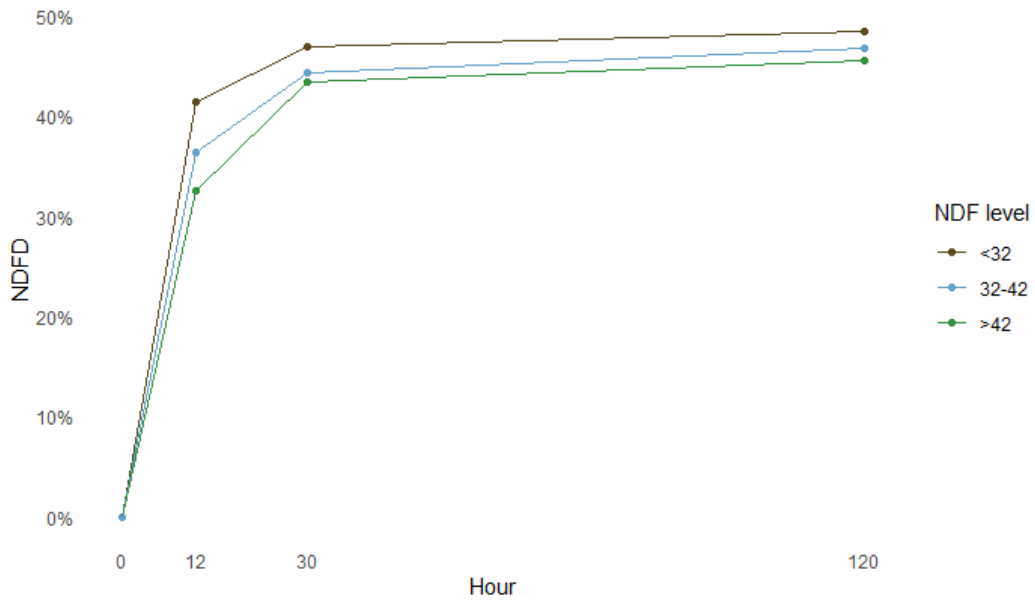
Comprehensive analyses of feed, forage, soil, water, molds and mycotoxins

Arcadia, WI • Stratford, WI • De Pere, WI
St. Cloud, MN • Battle Creek, MI • Jerome, ID

217 E. Main • Arcadia, WI 54612
P (608) 323-2123 • F (608) 323-2184

www.dairylandlabs.com

12hr NDFD allows greater differentiation of fiber digestion in alfalfa



Serving the testing needs of agriculture since 1958

Arcadia, WI • Stratford, WI • De Pere, WI
St. Cloud, MN • Battle Creek, MI • Jerome, ID

Comprehensive analyses of feed, forage, soil, water, molds and mycotoxins

217 E. Main • Arcadia, WI 54612
P (608) 323-2123 • F (608) 323-2184

www.dairylandlabs.com