

Snaplage/earlage summary



	Median	Normal min	Normal max	Count
Moisture	39.04	22.48	55.11	2489
CP	7.16	5.53	8.79	2371
ADICP %CP	6.14	0	12.35	2357
SP%CP	35	7.15	69.46	2361
Ammonia CPE%CP*	3.06	0.13	9.39	1052
ADF	9.07	4.01	14.73	2370
aNDF	18.17	9.19	28.31	2373
aNDFom	20.41	8.66	40.54	31
Sugar(WSC)	1.82	0.2	3.74	2359
Starch	61.76	52.09	70.54	2376
IVSD7-o	61.74	50.06	74.63	1137
Fat(EE)	3.3	2.48	4.11	1737
TFA	2.92	2.17	3.63	1731
16:0 Palmitic %TFA	13.2	11.97	14.52	1730
18:0 Stearic %TFA	1.2	0.72	1.78	1730
18:1 Oleic %TFA	28.77	26.87	30.66	1730
18:2 Linoleic %TFA	53.33	50.76	55.61	1730
18:3 Linolenic %TFA	1.72	1.1	2.74	1730
Ash	1.78	1.11	2.52	1737
Ca	0.05	0.01	0.11	2369
P	0.27	0.19	0.34	2369
Mg	0.12	0.09	0.14	2369
K	0.47	0.35	0.59	2369
S	0.08	0.06	0.11	78
Na	0.01	0	0.02	27
Lactic*	0.85	0	1.93	1104
Acetic*	0.37	0	0.79	1104

*Fermented samples only

Serving the testing needs of agriculture since 1958

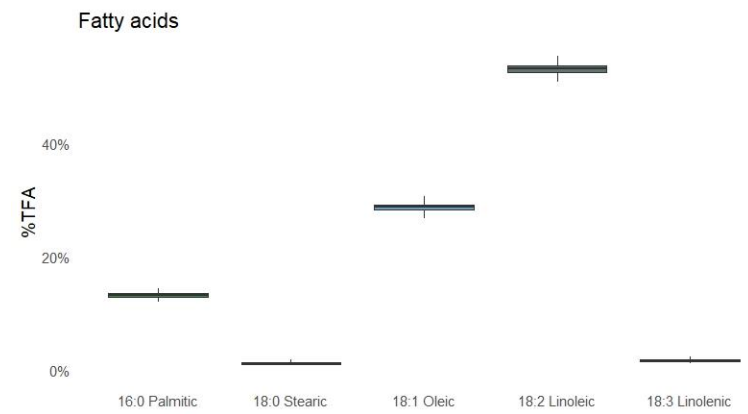
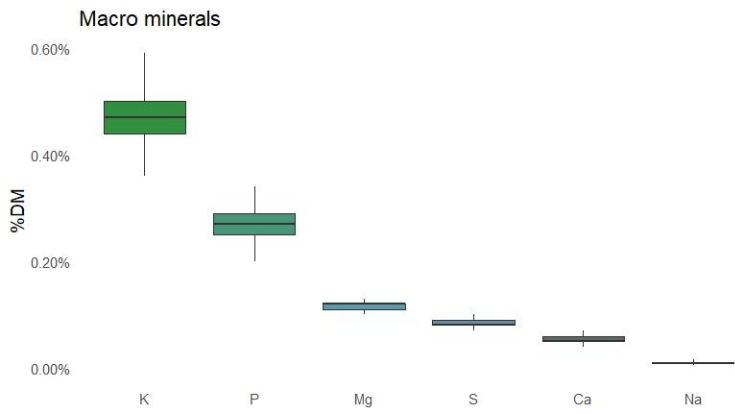
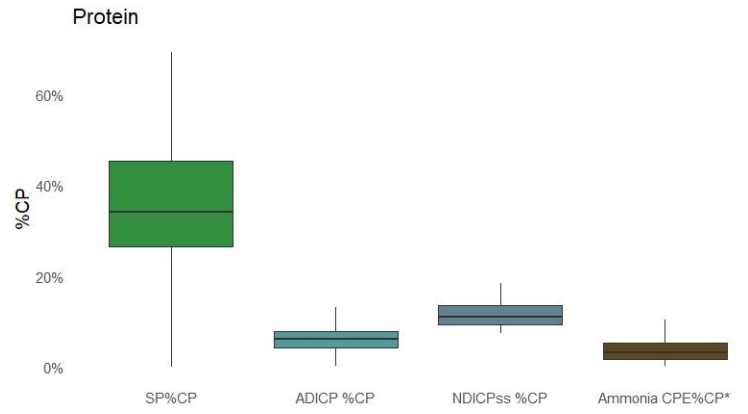
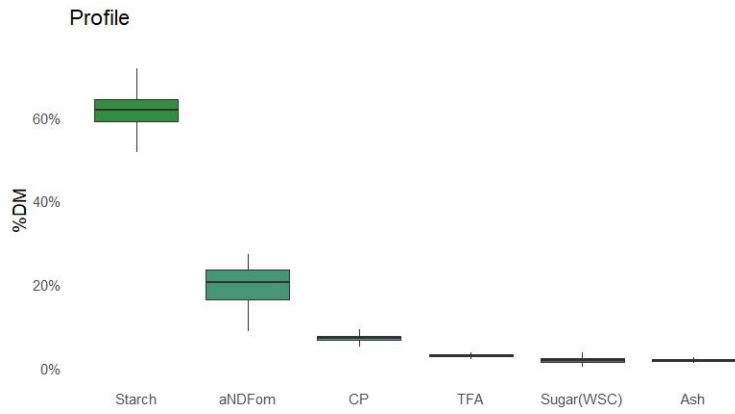
Comprehensive analyses of feed, forage, soil, water, molds and mycotoxins

217 E. Main • Arcadia, WI 54612
 P (608) 323-2123 • F (608) 323-2184

Arcadia, WI • Stratford, WI • De Pere, WI • St. Cloud, MN • Battle Creek, MI

www.dairylandlabs.com

Snaplage/earlage summary



Serving the testing needs of agriculture since 1958

Comprehensive analyses of feed, forage, soil, water, molds and mycotoxins

Arcadia, WI • Stratford, WI • De Pere, WI • St. Cloud, MN • Battle Creek, MI

217 E. Main • Arcadia, WI 54612
 P (608) 323-2123 • F (608) 323-2184

www.dairylandlabs.com