

Dry corn summary



DAIRYLAND
Laboratories, Inc.

	Median	Normal min	Normal max	Count
Moisture	14.79	9.86	17.97	894
CP	7.83	5.85	10.15	827
ADICP %CP	7.18	4.66	9.49	605
SP%CP	20.42	7.49	34.83	605
ADF	2.34	0.85	4.09	647
aNDF	7.02	3.13	11.77	691
aNDFom	7.64	1.1	16.53	101
Sugar(WSC)	1.78	0.41	3.41	611
Starch	71.26	64.94	76.93	728
IVSD7-o	48.05	37.09	57.71	306
Fat(EE)	3.91	2.52	5.31	618
TFA	3.53	2.71	4.41	427
16:0 Palmitic %TFA	13.03	12.23	13.93	427
18:0 Stearic %TFA	1.29	0.76	1.93	427
18:1 Oleic %TFA	28.53	27.3	29.79	427
18:2 Linoleic %TFA	53.71	51.99	55.37	427
18:3 Linolenic %TFA	1.55	1.24	1.89	427
Ash	1.46	0.77	2.27	528
Ca	0.02	0.01	0.25	643
P	0.3	0.2	0.4	651
Mg	0.12	0.08	0.15	651
K	0.4	0.27	0.54	651
S	0.09	0.05	0.14	79

Serving the testing needs of agriculture since 1958

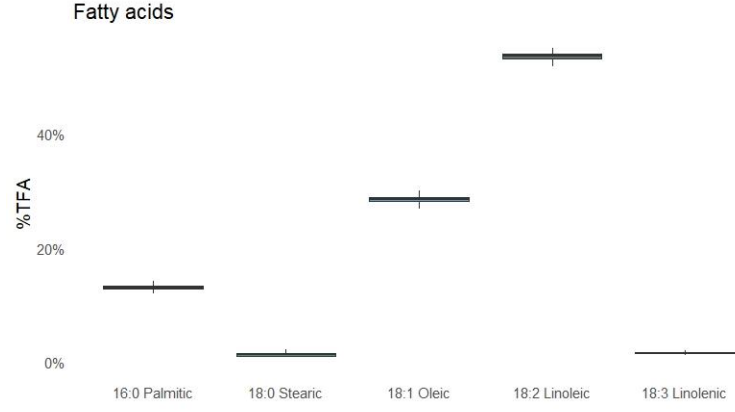
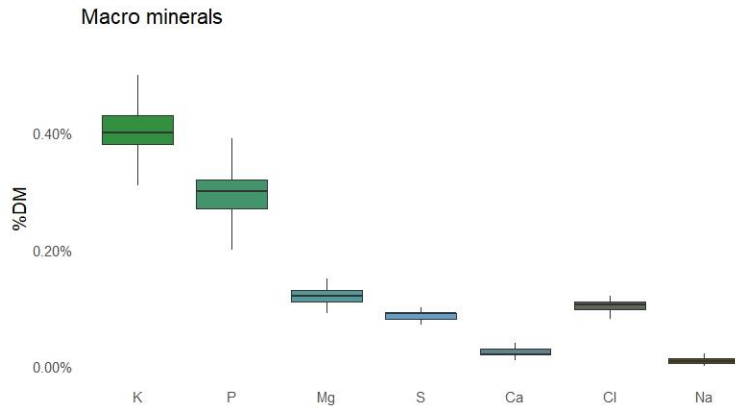
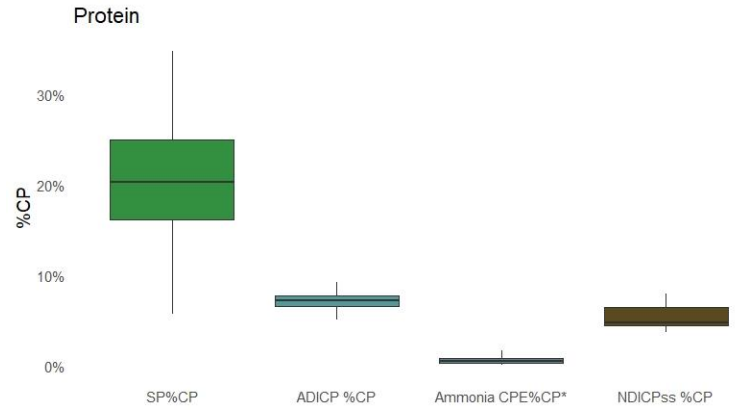
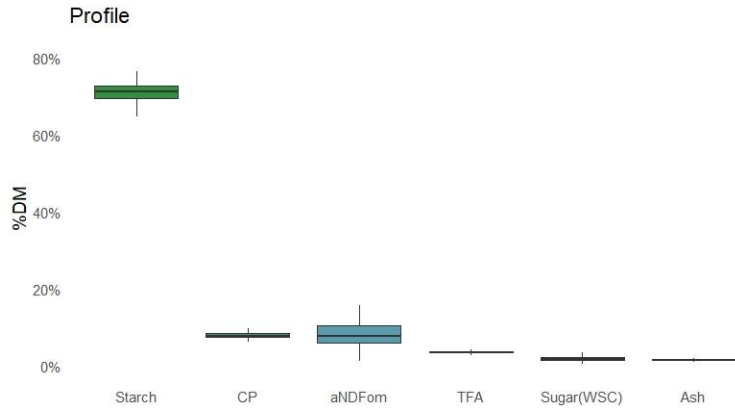
Comprehensive analyses of feed, forage, soil, water, molds and mycotoxins

Arcadia, WI • Stratford, WI • De Pere, WI • St. Cloud, MN • Battle Creek, MI

217 E. Main • Arcadia, WI 54612
P (608) 323-2123 • F (608) 323-2184

www.dairylandlabs.com

Dry corn summary



Serving the testing needs of agriculture since 1958

Comprehensive analyses of feed, forage, soil, water, molds and mycotoxins

Arcadia, WI • Stratford, WI • De Pere, WI • St. Cloud, MN • Battle Creek, MI

217 E. Main • Arcadia, WI 54612
 P (608) 323-2123 • F (608) 323-2184

www.dairylandlabs.com