

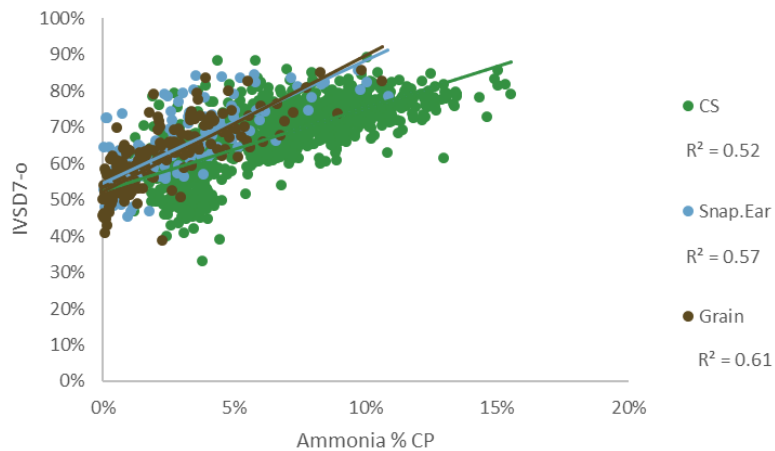
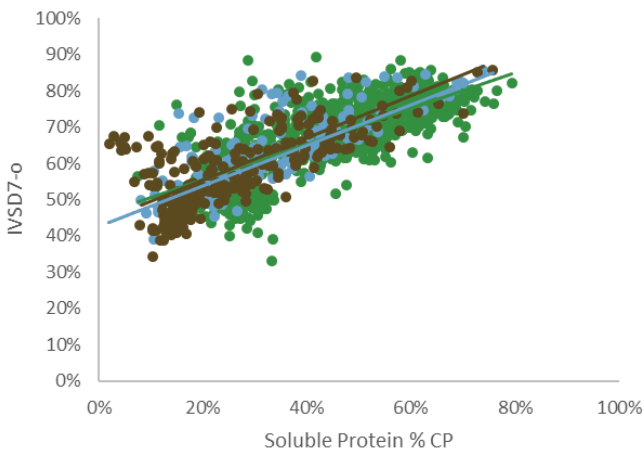
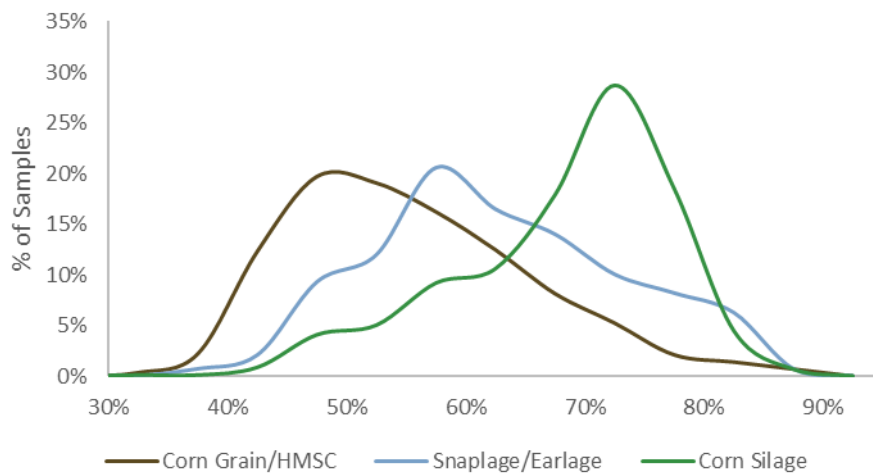
# IVSD7-o and Starch MIR kd rates



IVSD7-o and Starch MIR kd rates are designed to provide values appropriate for ration balancing. These values can be measured by wet chemistry or NIR, and are well correlated to other known indicators of starch digestibility like soluble protein and ammonia.

When integrated into starch digestion models with a passage rate of 8%/hr, these values will predict rumen degradability's in the range of 40-80% for corn grain, earlage, snaplage, and corn silage.

IVSD7-0



Serving the testing needs of agriculture since 1958

Arcadia, WI • Stratford, WI • De Pere, WI • St. Cloud, MN

Comprehensive analyses of feed, forage, soil, water, molds and mycotoxins

217 E. Main • Arcadia, WI 54612  
P (608) 323-2123 • F (608) 323-2184

www.dairylandlabs.com